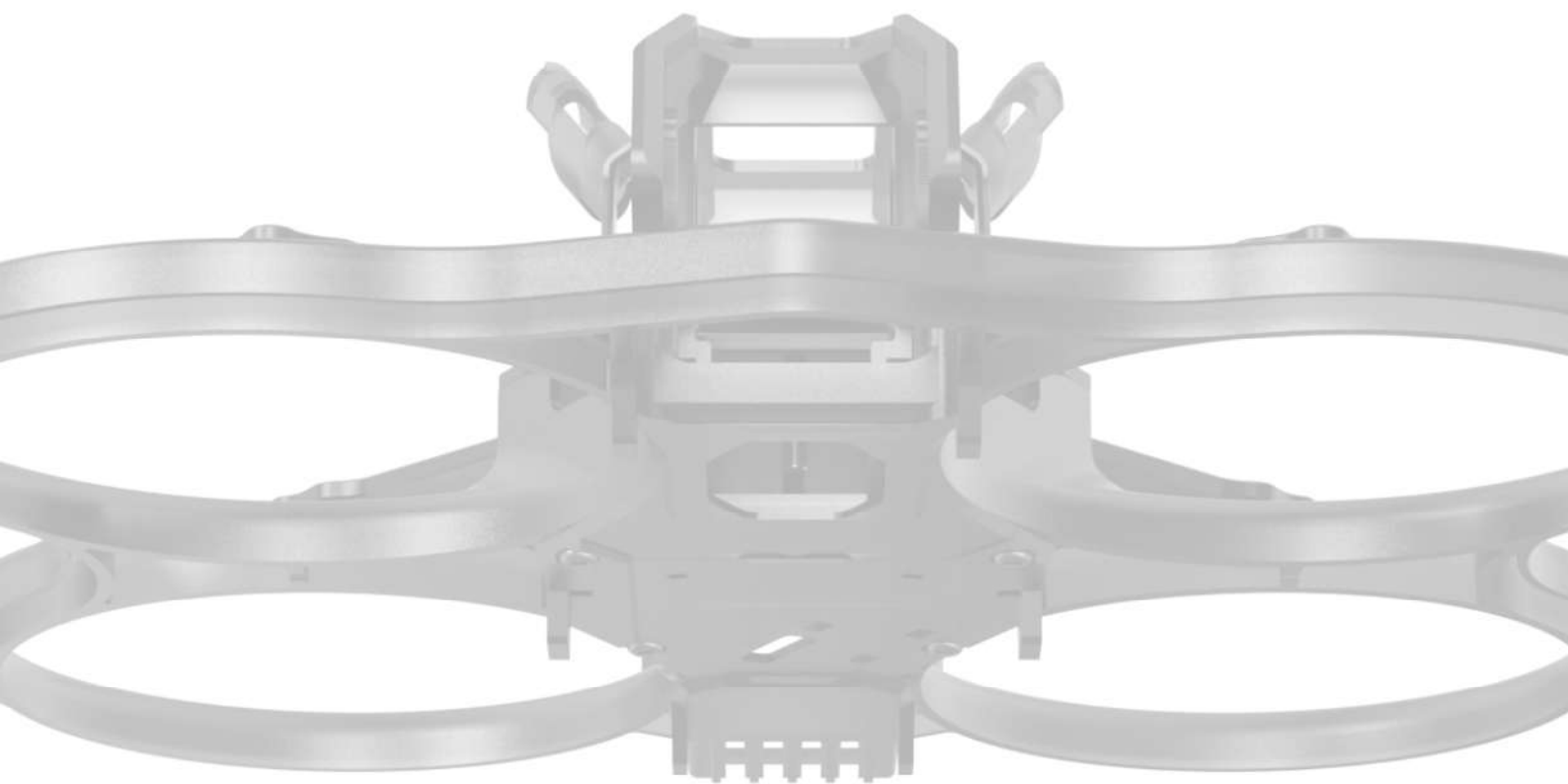




# FRAME INSTALLATION INSTRUCTIONS



**BEE25**

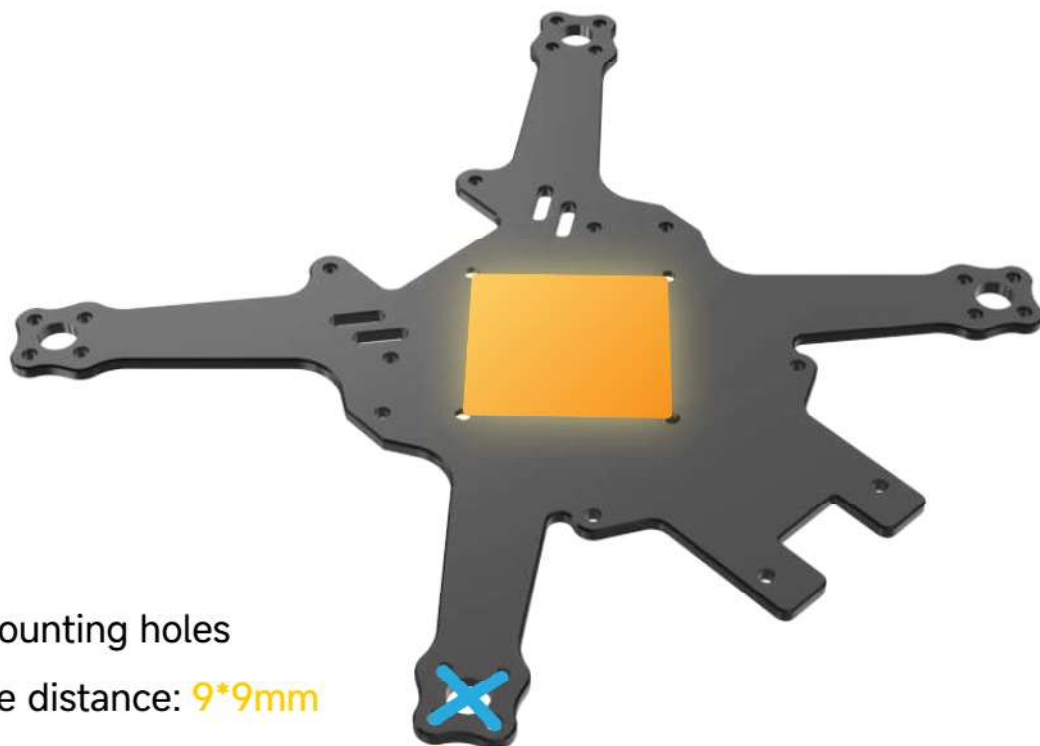
\*Note: 3D effect requirements, the actual object shall prevail.

\*Due to the small screw size, manual installation is recommended. Avoid using an electric screwdriver to prevent excessive torque that could break the screws.

---

# 01

## FC & Motor Mounting Holes

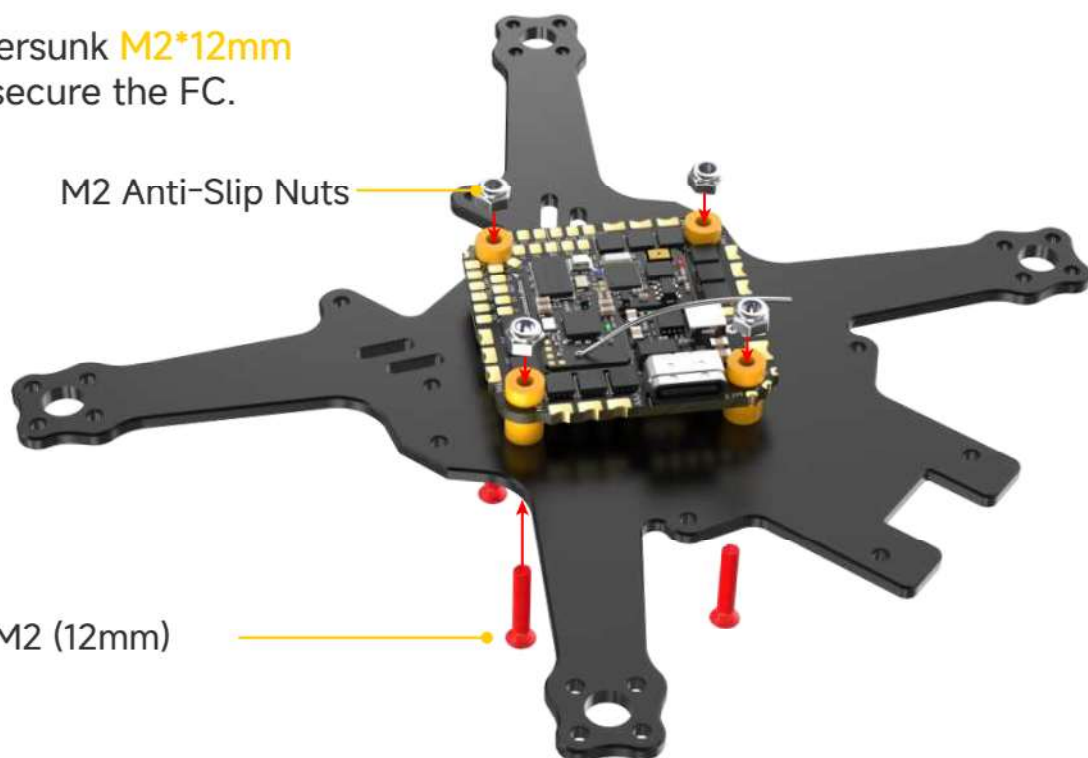


- 25.5\*25.5 AIO FC mounting holes
- Motor mounting hole distance: 9\*9mm

# 02

## FC Installation

- ▶ Use four countersunk M2\*12mm hex screws to secure the FC.

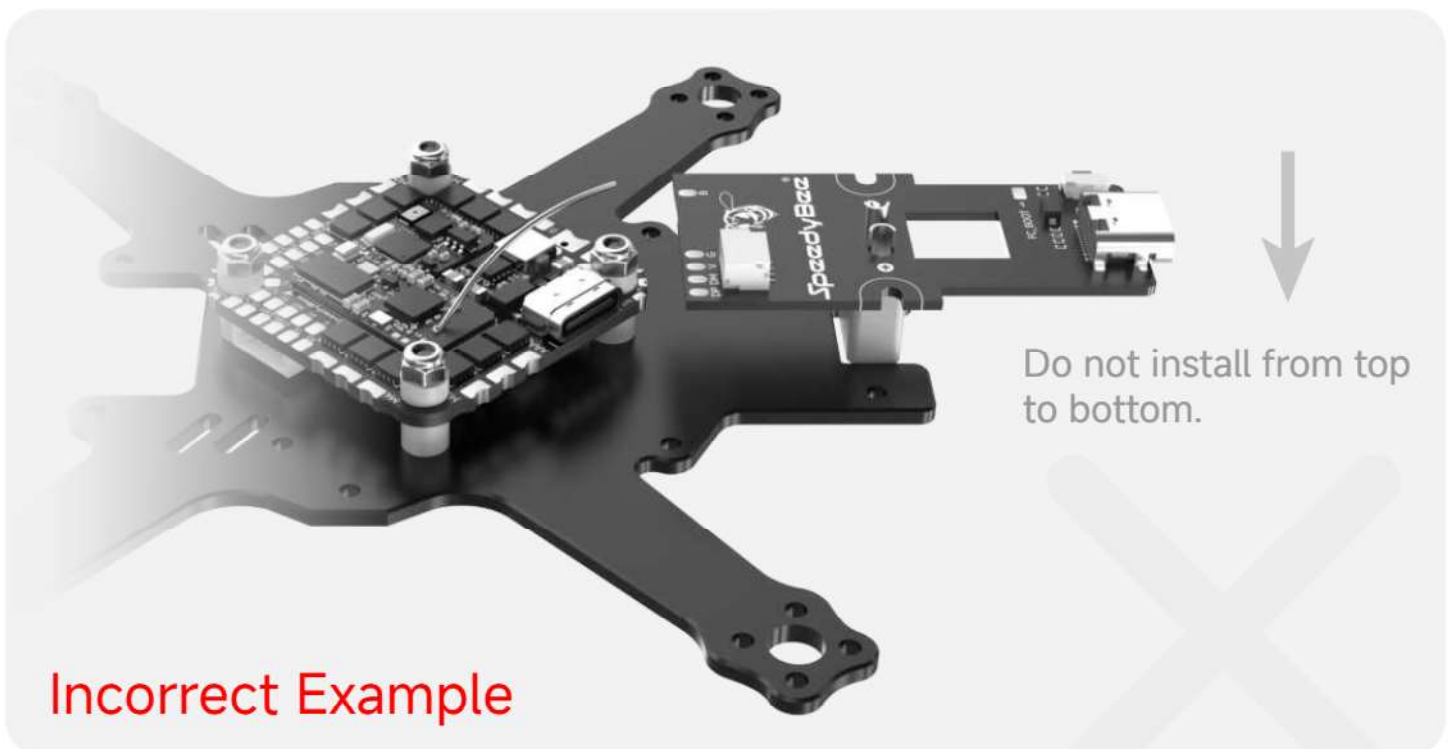


M2 Anti-Slip Nuts

Countersunk screw M2 (12mm)

# 03 EXT LITE/PRO Installation Method

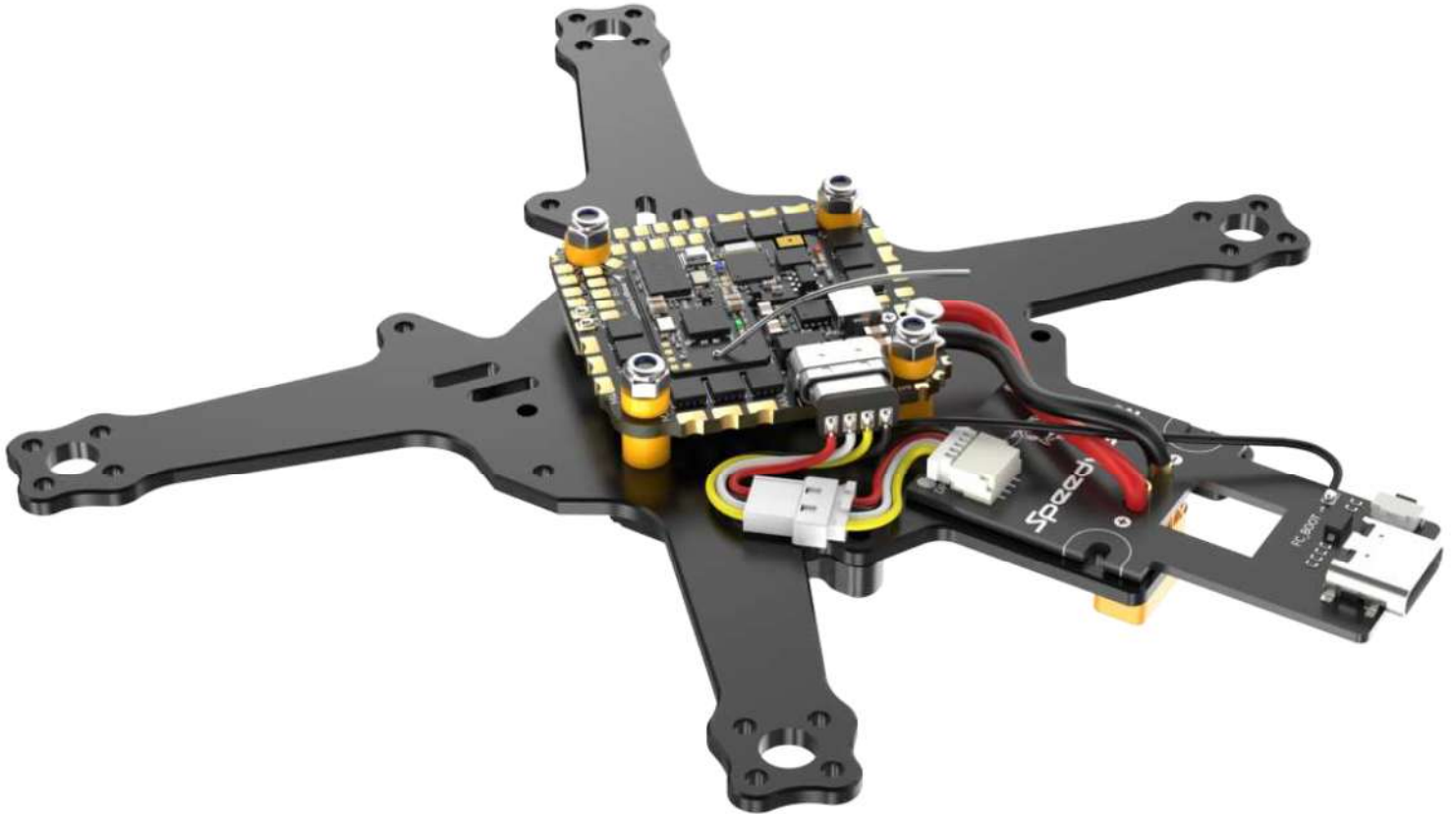
- ▶ Slide the EXT LITE/PRO board into the frame from the rear carbon plate.



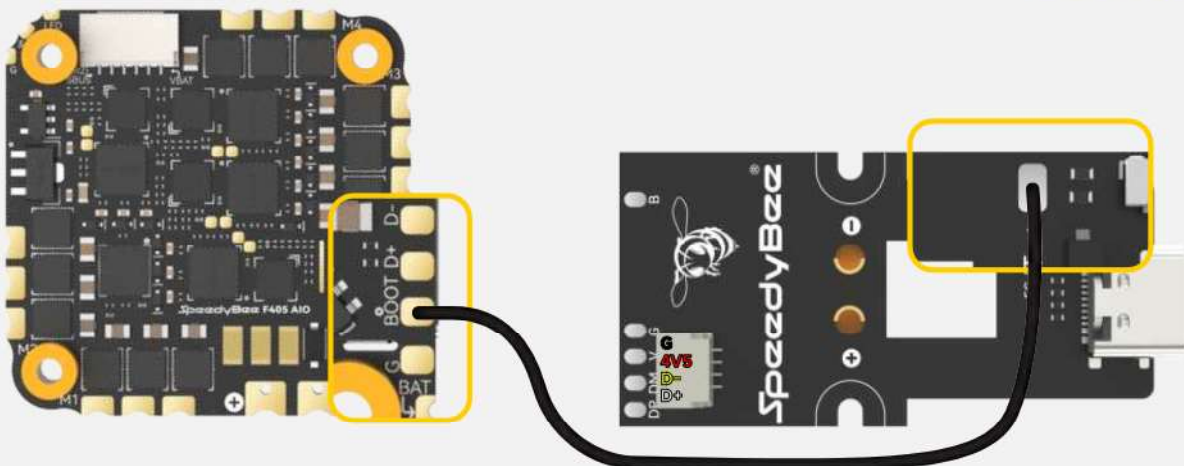
Incorrect Example

## 04 EXT LITE Installation

- ▶ Connect the positive and negative terminals of EXT LITE to the flight controller using the included 18AWG red and black power cables. Insert the 4PIN cable into EXT LITE and plug the Type-C/Micro USB into the flight controller's tuning port.



- ▶ Hold the side button on EXT LITE and power the flight controller to enter **DFU mode**. Only for flight controllers with **BOOT pads**.



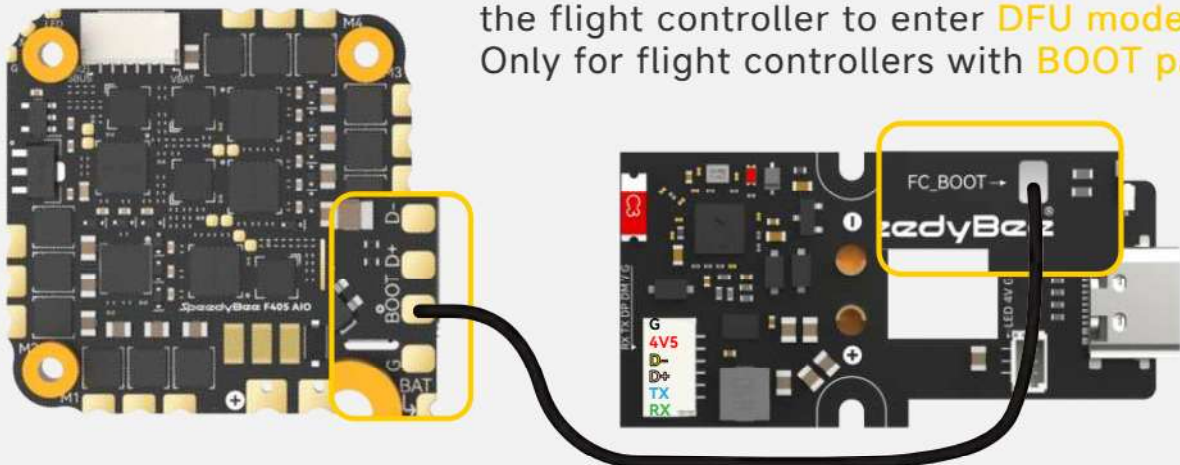


## 05 EXT PRO Installation

- ▶ 1. Connect the positive and negative terminals of EXT PRO to the flight controller using the included 18AWG red and black power cables. Solder the capacitor to the PRO XT30 head (ensure correct capacitor polarity). ;
- ▶ 2. Insert the 6PIN cable into EXT PRO and plug the Type-C/Micro USB into the flight controller's tuning port.;
- ▶ 3. Connect TX and RX of EXT PRO to RX and TX of the flight controller respectively, and enable the corresponding ports to enable tuning via EXT PRO's Bluetooth module.



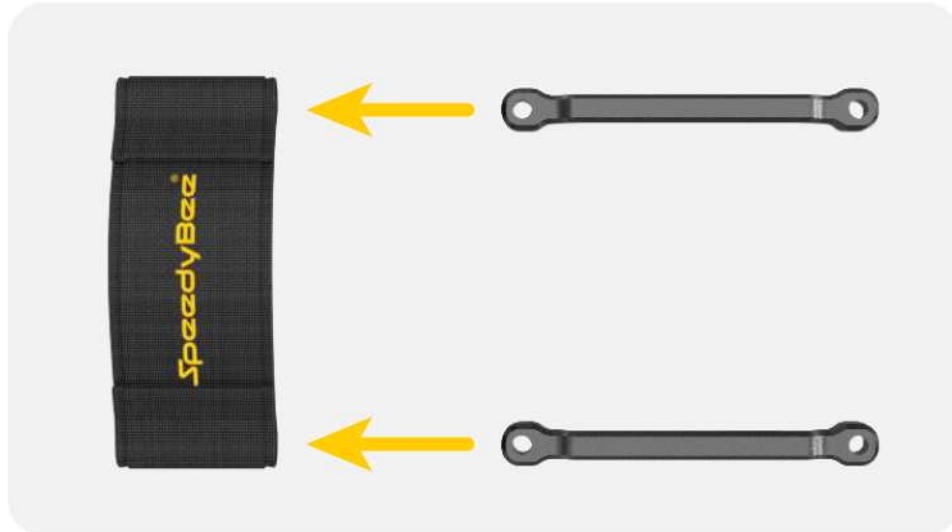
- ▶ Hold the side button on EXT PRO and power the flight controller to enter **DFU mode**. Only for flight controllers with **BOOT pads**.



# 06

## CNC and Strap Installation

- ▶ Thread the elastic strap into the CNC, place the CNC on the carbon plate, and tighten it from bottom to top using **M2\*6** screws.



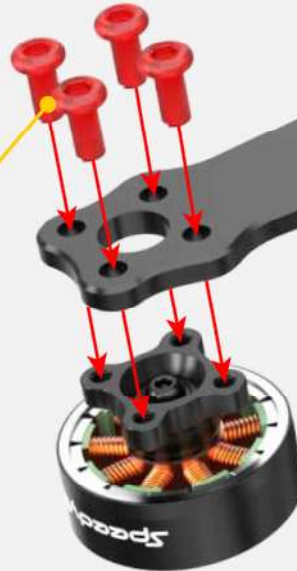
Button head socket screw M2 (6mm)

# 07

## Motor Installation

- ▶ Secure the motors using 16 **M2\*4** screws.

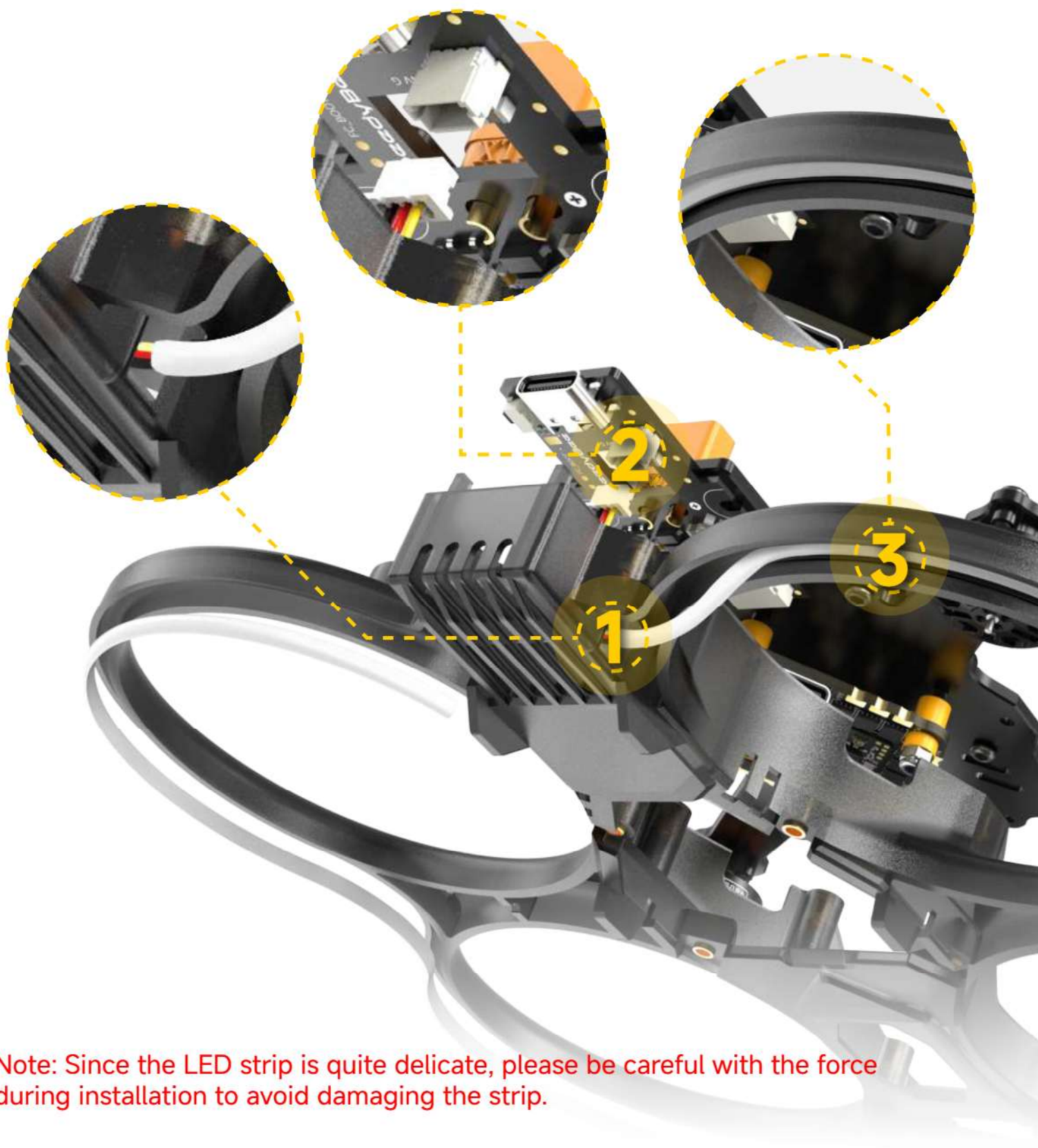
Button head socket screw  
M2 (4mm)





## 08 EXT PRO LED Strip Installation

- ▶ 1. Insert the LED strip from the right side of the rear of the protective ring.
- ▶ 2. Connect the 3-pin plug to the reserved socket of the EXT PRO.
- ▶ 3. Embed the LED strip into the protective ring's inner layer, and secure it along the inner wall.



**Note:** Since the LED strip is quite delicate, please be careful with the force during installation to avoid damaging the strip.



## 09 Ring Installation

- Use four **M2\*6** screws to secure the upper carbon plate onto the protective ring.

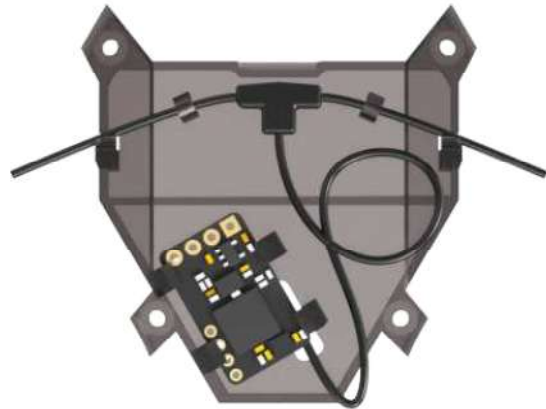
Button head socket screw M2 (6mm)



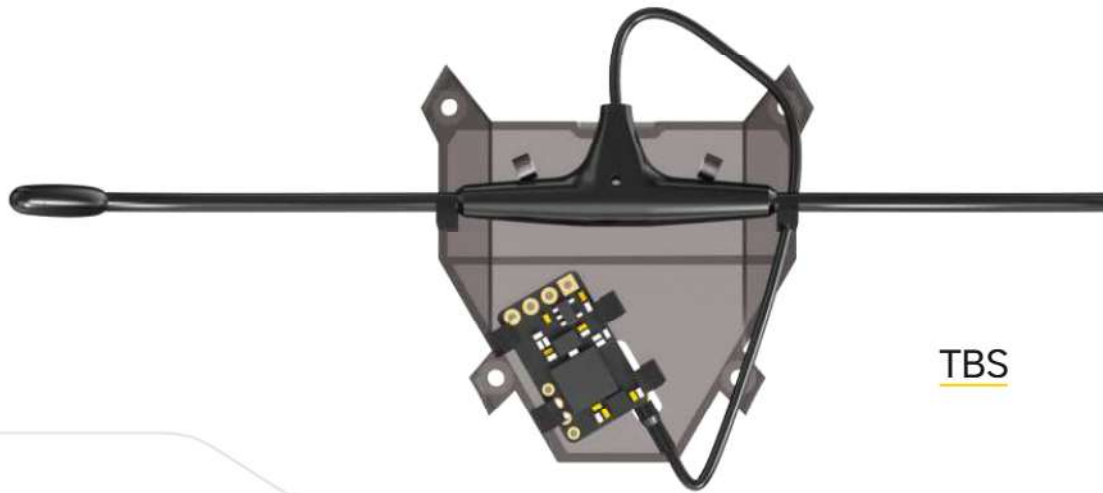
# 10

## Receiver Installation

- ▶ 1. Install the corresponding receiver as shown in the diagram.



ELRS



TBS

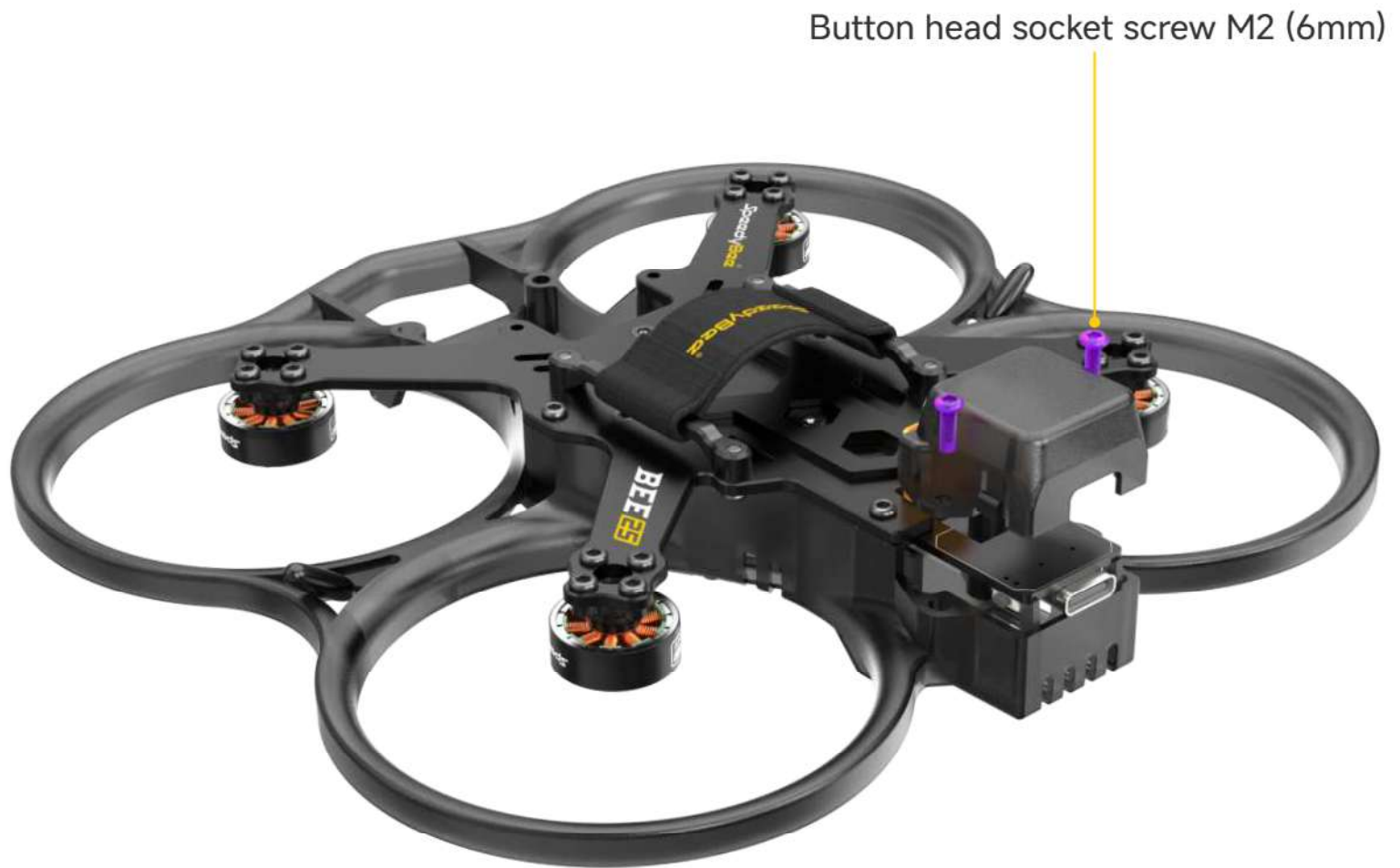
- ▶ 2. After soldering and installing the receiver, mount the base plate onto the protective ring and secure it using four M2\*6mm (button head socket) screws.



# 11

## GPS Cover Installation

- ▶ Use two **M2\*6** screws to install the GPS cover; frame installation is complete.



# 12 Propeller Installation

- ▶ Secure the propellers using 8 **M2\*7** screws.

Button head socket screw  
M2 (7mm)





# 13

## Antenna Replacement

- ▶ 1. Remove the screws on the antenna cover and slide the original antenna out to the right.



M1.6 cross screws (6mm)



M1.6 cross screw (6mm)

- ▶ 2. Install the antenna from the accessory kit into the corresponding port and secure the antenna cover with an original **M1.6\*6mm** cross screw.

- ▶ 3. Remove the remaining three screws below the Type-C port of the O3 Air Unit.

M1.6 cross screw (6mm)



\*Note: The O3 Air Unit shown in the diagram is for illustrative 3D effects; the O3 Air Unit is not included.

# 14

## Injection-Molded Head Installation



- ▶ 1. Thread the replaced antennas on both sides out of the hexagonal shape on the side of the head.
- ▶ 2. Install the O3 Air Unit with the Type-C port facing up into the injection-molded head and secure it to the bottom positions using 4 **M1.6\*8mm** (cup head hex) screws from the accessory kit.
- ▶ 3. Install the lens vibration-damping silicone from the inside out into the head.

- ▶ 4. \*Wrap the O3 Air Unit to camera connection cable 3 times. Then install the camera between the two pieces of vibration-damping silicone. Secure with 4 **M2\*6mm** (button head socket) screws.



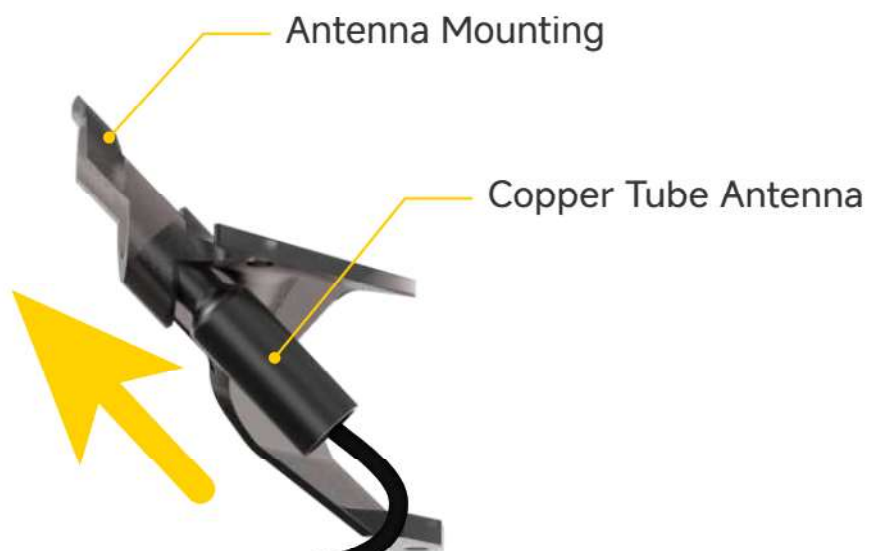
\*Wrap the O3 Air Unit to camera connection cable 3 times.



# 15

## Antenna Mount Installation

- ▶ Install the copper tube antenna into the designated location and secure it with 2 **M1.6\*4mm** (flat head cross) screws.



Button head socket screw M2 (6mm)

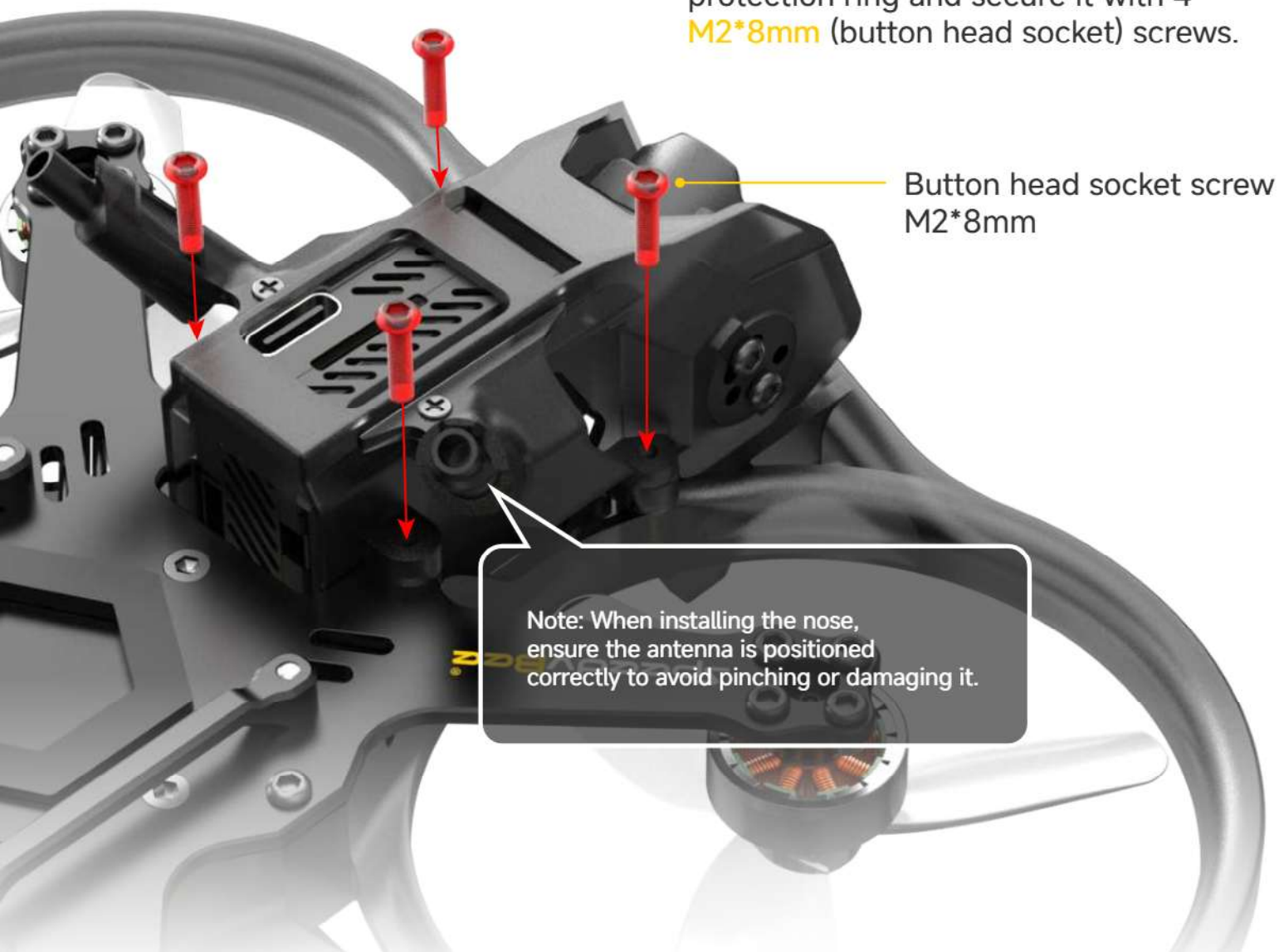


# 16 Head Installation

- ▶ 1. Insert the 6-pin cable into flight controller and O3 Air Unit.



- ▶ 2. Attach the assembled head to the protection ring and secure it with 4 **M2\*8mm** (button head socket) screws.



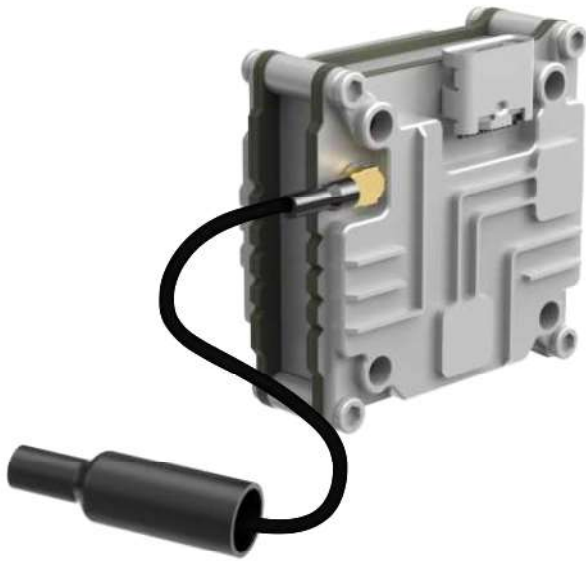
Button head socket screw  
M2\*8mm

Note: When installing the nose,  
ensure the antenna is positioned  
correctly to avoid pinching or damaging it.



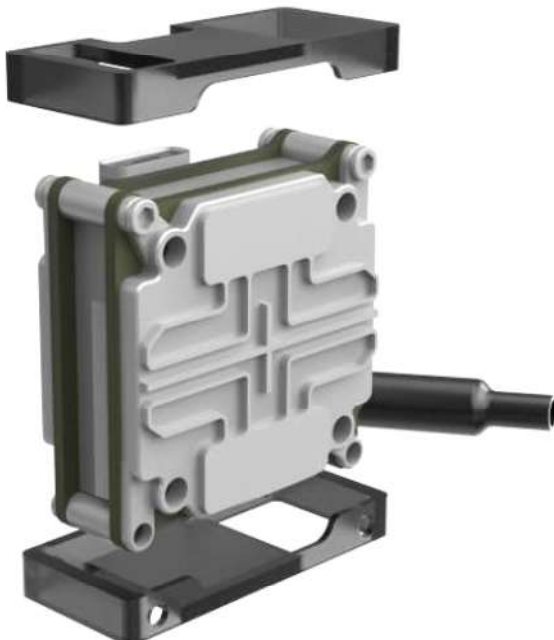
# 17

## LINK Installation



- ▶ 1. Replace the LINK antenna with the corresponding antenna from the accessory kit.

- ▶ 2. Remove the 4 original screws at the bottom of the LINK.



- ▶ 3. Install the extension part onto the LINK as shown in the diagram.

**Note:** The LINK extension part can be downloaded and printed from the SpeedyBee official website.